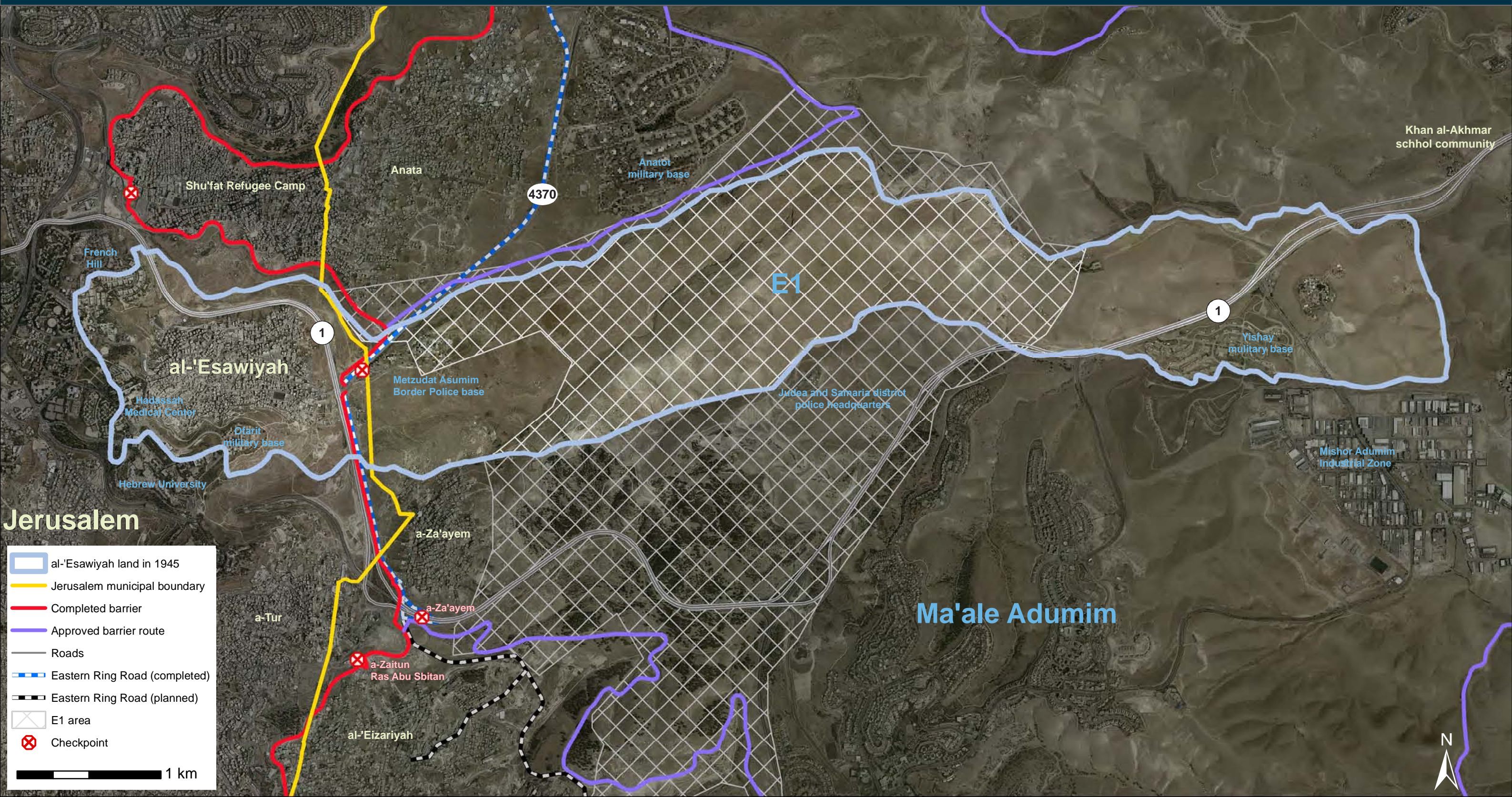


# ISRAELI TAKEOVER OF AL-'ESAWIYAH LAND



Jerusalem

Ma'ale Adumim

Legend:

- al-'Esawiyah land in 1945
- Jerusalem municipal boundary
- Completed barrier
- Approved barrier route
- Roads
- Eastern Ring Road (completed)
- Eastern Ring Road (planned)
- E1 area
- Checkpoint

1 km

